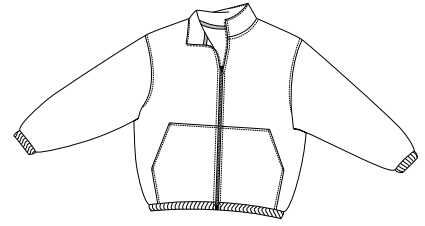
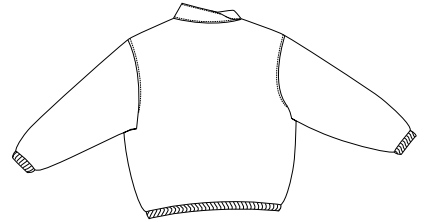


# R-Tek™ Fleece Full Zip

PORT AUTHORITY®



Front



Back

## JP77

- \* 13-ounce \* 100% filament polyester R-Tek™ fleece \* Twill-trimmed neck
- \* Elastic cuffs and waistband \* Velcro close slash pockets

### Care Instructions:

Machine wash warm. Wash inside out with like colors. Line dry. Do not bleach. Do not iron. Do not dry clean.

### Finished Measurements in Inches

Size	XS	S	M	L	XL	2XL	3XL	4XL
Length	25	26	27	28	29	30	30.5	31
Chest	22	23.5	25	26.5	28	29.5	31	32.5
Sleeve	32	33.5	35	36	37	38	38.5	39
Collar Hight	2.75	2.75	2.75	2.75	2.75	2.75	2.75	2.75
Pocket Dim	11.5x9.25	11.5x9.75	12x10.25	12x10.75	12.5x11.25	12.5x11.75	13x12.25	113x12.75
Areas for Decoration	Left/Right Chest, Full Back		Port Pocket™		NA			

Collar measured center back seam to top hem. Chest width measured 1" below arm hole. Body length measured from back neck seam to hem. Sleeve length measured from center back seam to hem.

### Colors

	Black
	Grey Heather
	Midnight Heather
	Navy

### Please Note:

Colors shown are approximate and for reference only. For closest match see PMS colors, or for exact match, returnable samples and grommated samples are available.

### Color Chart

Colors	Black	Grey Heather	Midnight Heather	Navy
Textile PMS	19-4006TC	No Match	No Match	19-3920TC
General PMS	Process Black	No Match	No Match	533C